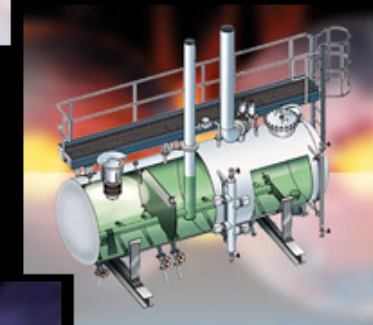
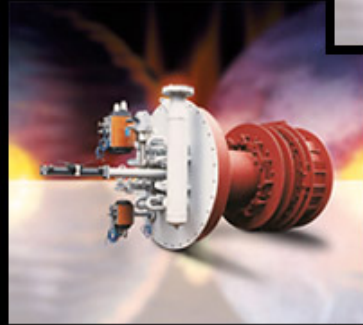


Presentation



**Manufacturing
&
Services**



Start

**Stork
Thermeq BV**

CORE COMPETENCE PU FABRICATION

ASSEMBLY:

- Submerged-Arc welding (SAW)
- Membrane panel welding
- Manual welding (ELE, ARG/TIG, MIG, MAG)
- Heat treatment

TUBE COMPONENT PRODUCTION:

- Automatic tube end machine
- Tube bending
- Contour flame cutting

SHEET PLATE COMPONENT PRODUCTION:

- Flame cutting machine
- Press
- Plate rolling machine



Core Competence

Products

- Engineered
- Service
- New projects
- Several components

Distinguishing capacity



**Core
Competence**

Products

- Engineered
- Service
- New projects
- Several components

**Distinguishing
capacity**

PRODUCTS:

Manufacturing & Services for:

Engineered products	:	ARP, deaerator, burners
Boiler services	:	Panels, superheater tubes
Boiler new projects	:	Vessel, headers, panels
Several components	:	Compressor casing, autoclaves, base plates

ENGINEERED PRODUCTS

Core
Competence

Products

- Engineered
- Service
- New projects
- Several components

Distinguishing
capacity



ABSORPTION
REFRIGERATION
PLANT



BURNER



DEAERATOR

BOILER SERVICE

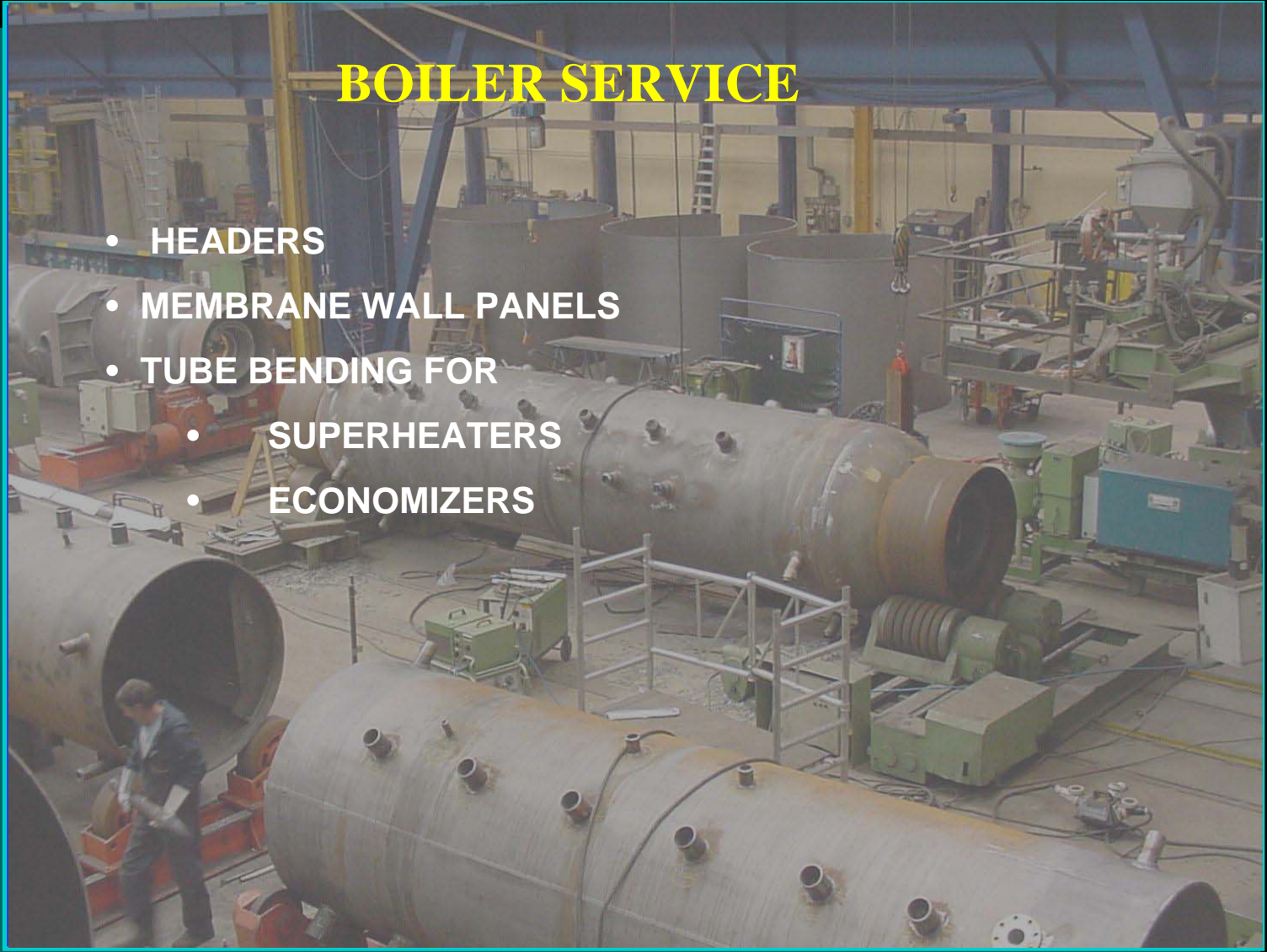
Core Competence

Products

- Engineered
- **Service**
- New projects
- Several components

Distinguishing capacity

- HEADERS
- MEMBRANE WALL PANELS
- TUBE BENDING FOR
 - SUPERHEATERS
 - ECONOMIZERS



BOILER NEW PROJECTS

- VESSEL
- MODULES / HEADERS
- MEMBRANE WALL PANELS

Core Competence

Products

- Engineered
- Service
- **New projects**
- Several components

Distinguishing capacity



SEVERAL (NON BOILER) COMPONENTS

Core Competence

Products

- Engineered
- Service
- New projects
- **Several components**

Distinguishing capacity

- HEAVY CONSTRUCTION
- APPARATUS



Core
Competence

Products

- Engineered
- Service
- New projects
- Several components

Distinguishing
capacity

DISTINGUISHING CAPACITY:

1. Quick and Reliable
2. Large construction
3. Heavy (hoisting facility 160 ton)
4. Quality





MANUFACTURING TOUR

Main projects on the floor this afternoon

DEAERATORS:

- Lurgi Energy for UCML projects
- Foster Wheeler for Estonia
- Kamps for Segers (2x)
- Siemens Erlangen for KUANG project Taiwan

SUPERHEATERS:

- Twence
- HVC Alkmaar



MANUFACTURING TOUR

EVAPORATOR:

- AVR

MEMBRANE WALL PANELS:

- Wehrle
- CMI
- NES

Thank you for your interest

Enjoy your dinner

Norbert Waanders

Omke Poel